



TATLISU- NORTH CYPRUS



Ercan Airport **39** Minutes - Larnaca Airport **1** Hour
Girne **40** Minutes - Tatlisu **3** Minutes



CAROB
HILL



GİRNE







MEDITERRANEAN *Lifestyle*









Luxury with
Breathtaking Views

Natural Beauty Combined with All Year Sunshine







CAROB
HILL

38 Units

2 Communal Swimming Pools

GYM

22 2+1 Twin Villas with a Sea and Mountain View

8 Loft Apartments with a Sea and Mountain View

8 1+1 Apartments with a Sea and Mountain View

2+1 TWIN VILLAS

Treat your loved ones to a bbq on the roof terrace, enjoy the breeze coming from the sea from the balcony in front of your living room or feel the sun on your skin from your garden terrace.. All of this becomes a reality at Carob Hill Twin Villas





2+1

TWIN VILLAS

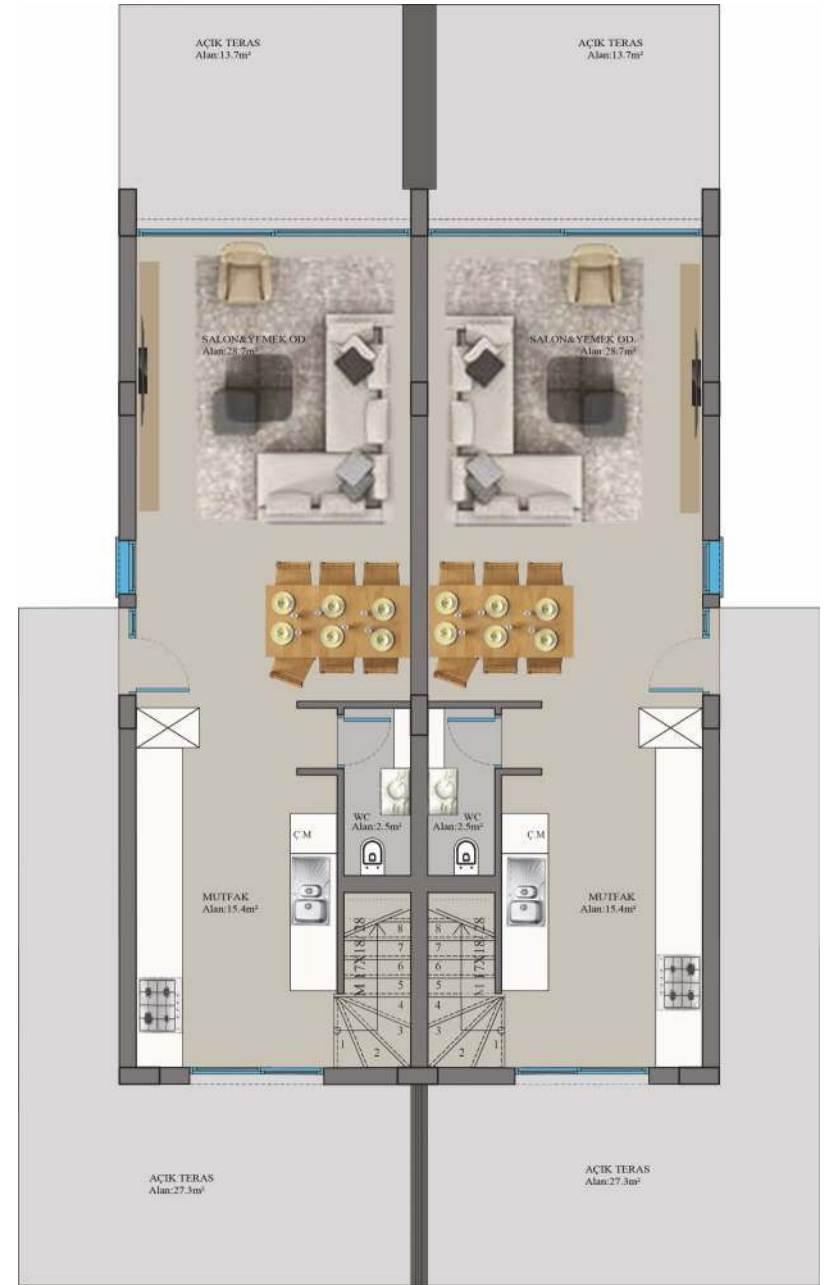
Ground Floor

With a ground floor kitchen and living room designed for your comfort you can set your mind at ease.









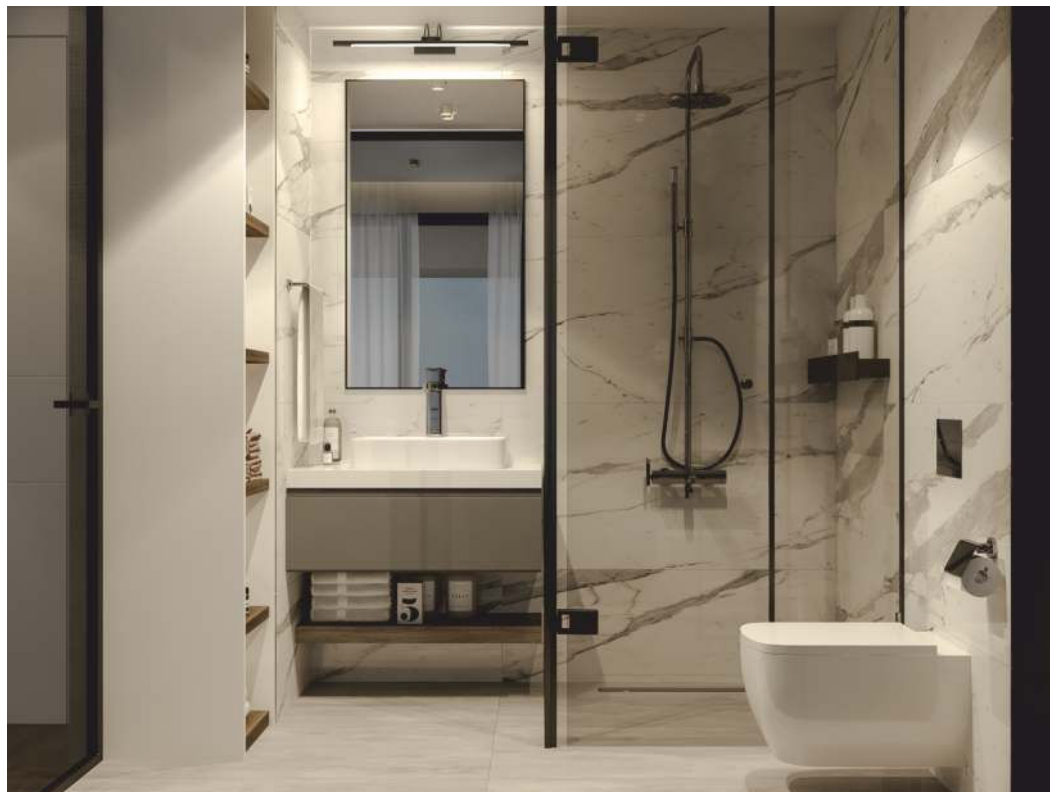
GROUND FLOOR PLAN



2+1 TWIN VILLAS

Master Bedroom

A sea view master bedroom with an ensuite bathroom is surely an eye-catcher. With its modern and unique design you will be able to unwind enjoy the tranquility and serenity of this unique location

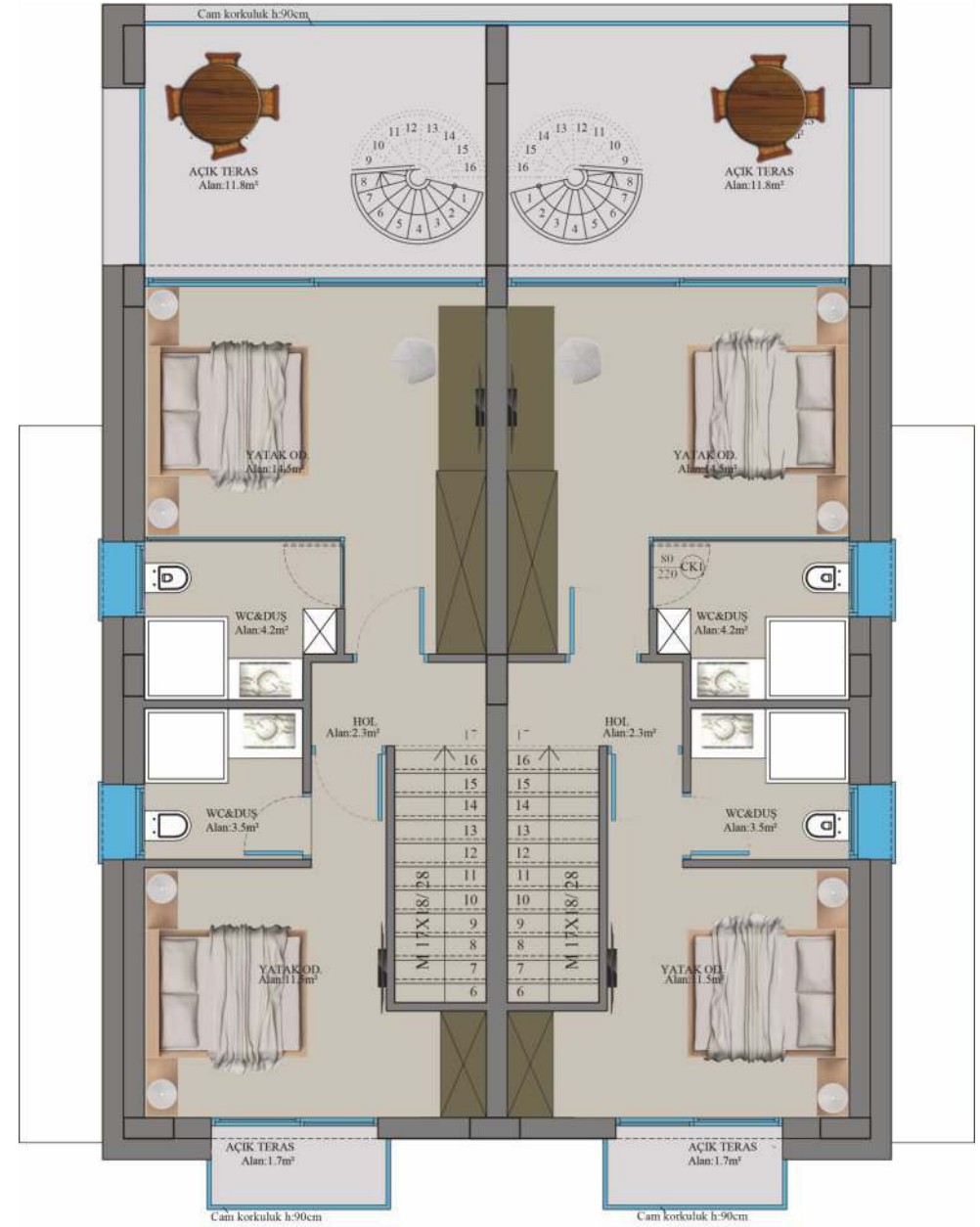


2+1 TWIN VILLAS

Guest Room

Treat your guests to a room with an ensuite bathroom and breathtaking mountain views.





FIRST FLOOR PLAN

1+1 / LOFT APARTMENTS





1 + 1

APARTMENTS

This cozy 1+1 apartment will attend to all your needs for a perfect stay. Its spacious well-designed kitchen and living room will provide you with all the comfort you wish

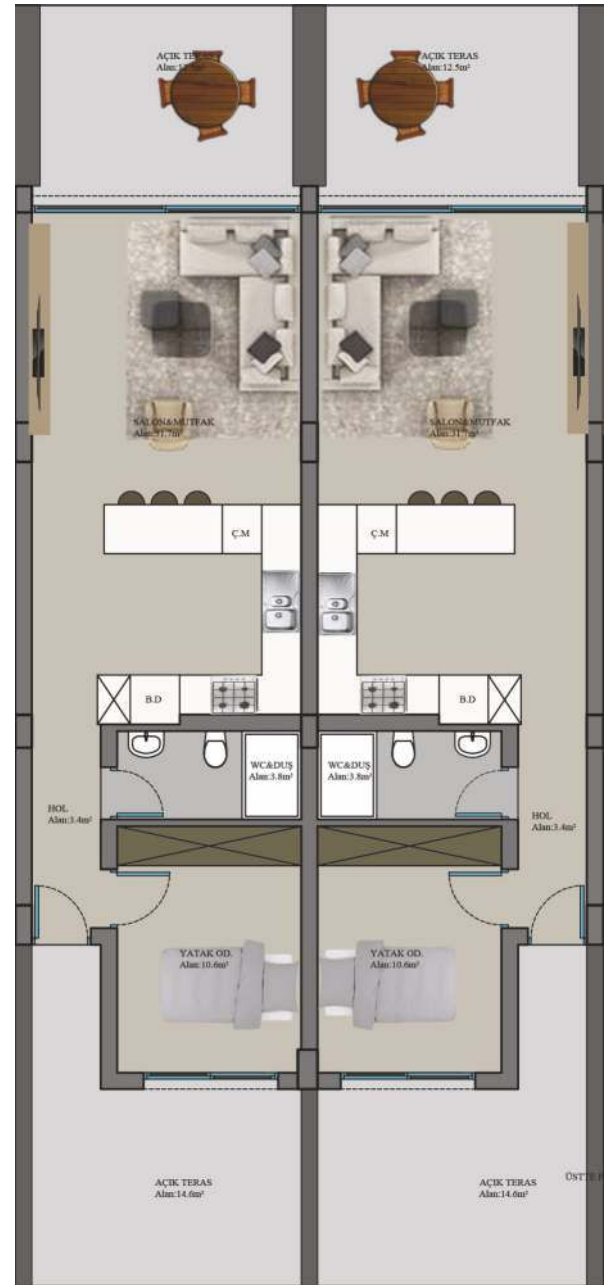




1+1 APARTMENTS

This stylish yet practical bedroom is designed to fulfill all your expectations.





GROUND FLOOR PLAN

LOFT₁₊₁ APARTMENTS

Our Loft Apartments are located on top of a hill and offer a cool and contemporary design with magnificent views of the Mediterranean Sea.

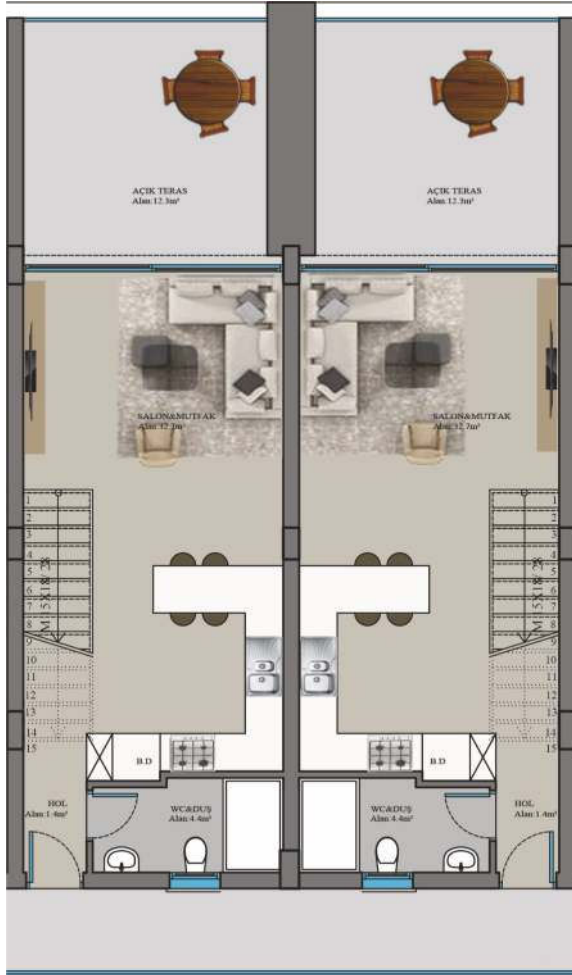




LOFT APARTMENTS

With the addition of a mezzanine floor you will be able to enjoy the sea views from your bedroom as well as your living room.





GROUND FLOOR PLAN



FIRST FLOOR PLAN



